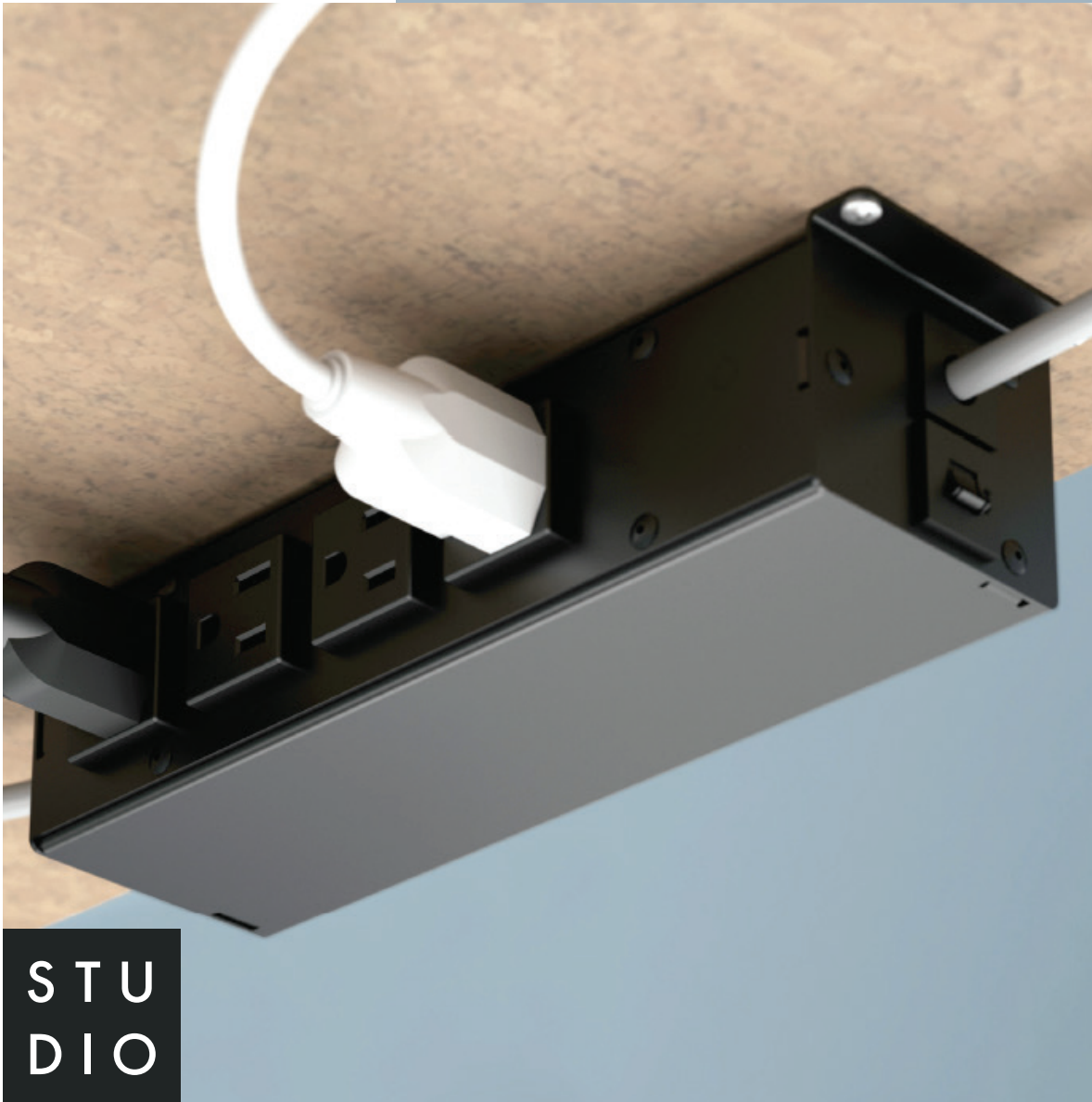


YOUR HEIGHT-ADJUSTABLE  
POWER SOLUTION.

## Ashley™ Inline Series



STU  
DIO

BY DEKKO

# Power in High Places.

## ENHANCING THE MOMENTUM

The Ashley™ InLine Series is the first product of its kind that offers the perfect power solution for height adjustable tables. For users looking for clean cord management, this means a single cord can provide power for up to ten devices or peripherals (when used with the Ashley™ Quad – 4 AC receptacles, 2 standard USB ports, 4 AC receptacles on the Ashley™ InLine unit).



## ASHLEY™ INLINE PROVIDES:

### Height-Adjustable Power

Designed to move with height-adjustable tables, Ashley™ InLine supplies up to eight power outlets at a time—all with a single cord to the wall. This streamlined offering provides 4 AC outlets mounted under the work surface and paired with various Ashley Series units - offering up to 4 additional AC power outlets and USB charging ports above the surface.

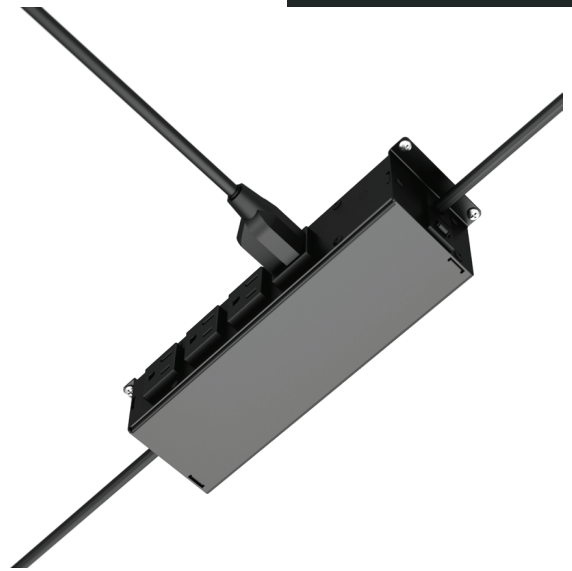
Perfect for powering monitors or providing power at desk height on mobile tables. InLine supplies power to devices, tablets, computers, and phones seamlessly. And eliminates the clutter once and for all.

Ashley™ InLine is UL 962A and 111 Listed.

ASHLEY™ INLINE



**ASHLEY™ INLINE**



**FEATURES:**

**Applications - In-line**

Under-mount

**Standard Metal Trim & Bracket Finishes**

- Silver
- Black
- White

**Standard Plastic Colors**

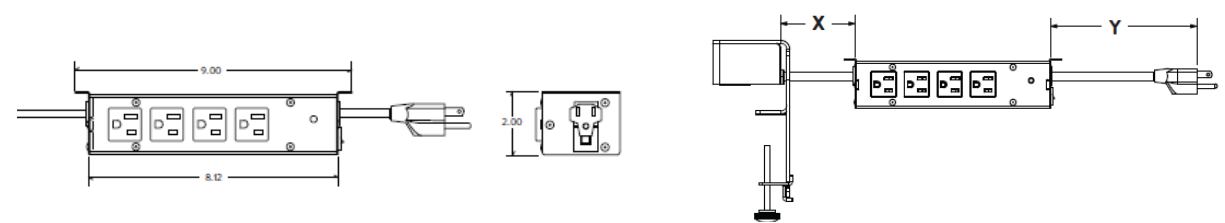
- White
- Grey
- Black

**Specifications**

- 4- 15A, 120V AC Power Outlets
- 15 Amp Circuit Breaker
- 2 Cord Lengths Per Unit: 2' - 3' - *From Ashley Unit to Inline Box* and 6' - 10' - *From Inline Box to Power Source*
- Compatible with the following Studio Products: Ashley Uno Series, Duo Series, Duo Wedge Series, Duo Air Series, 202 Series, 210 Series, Trio Series and Ashley Quad Series *(See Individual Spec Sheets for Product Details and color offerings)*
- No Table Cutout Required *(Exception of Ashley Duo Air and Ashley Duo Wedge)*
- UL 962A and UL 111 Listed
- UL 1310 Recognized
- Meets UL Spill Requirements
- Class 2, FCC Part 15 A Approved

**Dimensions**

- Ashley™ Inline Standard Power Box Dimensions: 9" x 8.12" x 2"
- "X" (See Figure Below) is Specified Distance from Ashley Unit to Inline Box = 2' or 3'
- "Y" (See Figure Below) is Specified Distance from Inline Box to Power Source = 6' or 10'



DESCRIPTION	LENGTHS CORDED & HARDWIRE	FINISH PLASTIC FACE/METAL TRIM	MODEL
<b>ASHLEY UNO INLINE - 4 POWER</b>			
• Clamp mount unit with 1 Power and 2 USB 2.1 Amp Charging Ports. Includes under-mounted add-on unit with 4 convenience outlets with various cord lengths	2' - 6' Corded	Black/Black White/Silver White/White	305125.22.04.01 305125.22.57.01 305125.22.VW.01
	3' - 6' Corded	Black/Black White/Silver White/White	305125.22.04.02 305125.22.57.02 305125.22.VW.02
	2' - 10' Corded	Black/Black White/Silver White/White	305125.22.04.05 305125.22.57.05 305125.22.VW.05
	3' - 10' Corded	Black/Black White/Silver White/White	305125.22.04.06 305125.22.57.06 305125.22.VW.06

<b>ASHLEY DUO INLINE - 4 POWER</b>			
• Clamp mount unit with 2 Power and 2 USB 2.1 Amp Charging Ports. Includes under-mounted add-on unit with 4 convenience outlets with various cord lengths	2' - 6' Corded	Black/Black White/Silver White/White	305125.22.04.01 305125.22.57.01 305125.22.VW.01
	3' - 6' Corded	Black/Black White/Silver White/White	305125.22.04.02 305125.22.57.02 305125.22.VW.02
	2' - 10' Corded	Black/Black White/Silver White/White	305125.22.04.05 305125.22.57.05 305125.22.VW.05
	3' - 10' Corded	Black/Black White/Silver White/White	305125.22.04.06 305125.22.57.06 305125.22.VW.06

DESCRIPTION	LENGTHS CORDED & HARDWIRE	FINISH PLASTIC FACE/METAL TRIM	MODEL
<b>ASHLEY TRIO INLINE - 4 POWER</b>			
<ul style="list-style-type: none"> <li>Clamp mount unit with 3 Power and 2 USB 2.1 Amp Charging Ports and 1 Data Knockout with data Adapter Kit (connectors sold separately). Includes under-mounted add-on unit with 4 convenience outlets with various cord lengths</li> </ul>	2' - 6' Corded	Black/Black White/Silver White/White	305053.22.04.01 305053.22.57.01 305053.22.VW.01
	3' - 6' Corded	Black/Black White/Silver White/White	305053.22.04.02 305053.22.57.02 305053.22.VW.02
	2' - 10' Corded	Black/Black White/Silver White/White	305053.22.04.05 305053.22.57.05 305053.22.VW.05
	3' - 10' Corded	Black/Black White/Silver White/White	305053.22.04.06 305053.22.57.06 305053.22.VW.06

**ASHLEY QUAD INLINE - 4 POWER**

<ul style="list-style-type: none"> <li>Clamp mount unit with 4 Power and 2 USB 2.1 Amp Charging Ports, 2 Data Knockouts with Data Adapter Kit (connectors sold separately). Includes under-mounted add-on unit with 4 convenience outlets with various cord lengths</li> </ul>	2' - 6' Corded	Black/Black White/Silver White/White	305095.22.04.01 305095.22.57.01 305095.22.VW.01
	3' - 6' Corded	Black/Black White/Silver White/White	305095.22.04.02 305095.22.57.02 305095.22.VW.02
	2' - 10' Corded	Black/Black White/Silver White/White	305095.22.04.05 305095.22.57.05 305095.22.VW.05
	3' - 10' Corded	Black/Black White/Silver White/White	305095.22.04.06 305095.22.57.06 305095.22.VW.06

DESCRIPTION	LENGTHS CORDED & HARDWIRE	FINISH PLASTIC FACE/METAL TRIM	MODEL	
<b>ASHLEY DUO AIR INLINE - 4 POWER</b>				
<ul style="list-style-type: none"> <li>Pop-up bezel unit with 2 Power and 2 USB 2.1 Amp Charging Ports. Includes under-mounted add-on unit with 4 convenience outlets with various cord lengths</li> </ul>	2' - 6' Corded	Black/Black White/Silver White/White	305070.22.04.01 305070.22.57.01 305070.22.VW.01	
	<i>* Requires Table Cutout</i>	3' - 6' Corded	Black/Black White/Silver White/White	305070.22.04.02 305070.22.57.02 305070.22.VW.02
	2' - 10' Corded	Black/Black White/Silver White/White	305070.22.04.05 305070.22.57.05 305070.22.VW.05	
	3' - 10' Corded	Black/Black White/Silver White/White	305070.22.04.06 305070.22.57.06 305070.22.VW.06	

**ASHLEY DUO WEDGE INLINE - 4 POWER**

<ul style="list-style-type: none"> <li>Angled bezel unit with 2 Power and 2 USB 2.1 Amp Charging Ports. Includes under-mounted add-on unit with 4 convenience outlets with various cord lengths</li> </ul>	2' - 6' Corded	Black/Black White/Silver White/White	305063.22.04.01 305063.22.57.01 305063.22.VW.01	
	<i>* Requires Table Cutout</i>	3' - 6' Corded	Black/Black White/Silver White/White	305063.22.04.02 305063.22.57.02 305063.22.VW.02
	2' - 10' Corded	Black/Black White/Silver White/White	305063.22.04.05 305063.22.57.05 305063.22.VW.05	
	3' - 10' Corded	Black/Black White/Silver White/White	305063.22.04.06 305063.22.57.06 305063.22.VW.06	



BY DEKKO



BY DEKKO

DESCRIPTION	LENGTHS CORDED & HARDWIRE	FINISH PLASTIC FACE/METAL TRIM	MODEL
<b>ASHLEY 202 INLINE - 4 POWER</b>			
<ul style="list-style-type: none"> <li>Clamp mount unit with 2 Power and 2 Data Knockouts with Data Adapter Kit (connectors sold separately). Includes under-mounted add-on unit with 4 convenience outlets with various cord lengths</li> </ul>	2' - 6' Corded	Black/Black White/Silver White/White	305093.22.04.01 305093.22.57.01 305093.22.VW.01
	3' - 6' Corded	Black/Black White/Silver White/White	305093.22.04.02 305093.22.57.02 305093.22.VW.02
	2' - 10' Corded	Black/Black White/Silver White/White	305093.22.04.05 305093.22.57.05 305093.22.VW.05
	3' - 10' Corded	Black/Black White/Silver White/White	305093.22.04.06 305093.22.57.06 305093.22.VW.06

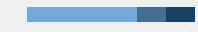
<b>ASHLEY 210 INLINE - 4 POWER</b>			
<ul style="list-style-type: none"> <li>Clamp mount unit with 2 Power and 2 USB 2.1 Amp Charging Ports. Includes under-mounted add-on unit with 4 convenience outlets with various cord lengths</li> </ul>	2' - 6' Corded	Black/Black White/Silver White/White	305094.22.04.01 305094.22.57.01 305094.22.57.01
	3' - 6' Corded	Black/Black White/Silver White/White	305094.22.04.02 305094.22.57.02 305094.22.VW.02
	2' - 10' Corded	Black/Black White/Silver White/White	305094.22.04.05 305094.22.57.05 305094.22.VW.05
	3' - 10' Corded	Black/Black White/Silver White/White	305094.22.04.06 305094.22.57.06 305094.22.VW.06

## SPECIFICATION INSTRUCTIONS

### TO ORDER PLEASE SPECIFY THE FOLLOWING

Step 1:	Step 2:	Step 3:
Base Model # (Part Number)	Finish Options	NEMA Plug or Hardwire Lengths

**EXAMPLE**



3 0 5 0 5 0 . 0 1 . 5 7 . 0 6

Base Model: Ashley Duo  
Finish Option: White/Silver  
Cord Length: 6'

Code	Plastic Face/Metal Trim	Cord Color	Code	Cord Length
.04	Black/Black	Black	.06	6' or 72"
.02	Black/Silver	Black	.10	10' or 120"
.08	Gray/Black	Black		
.01	Gray/Silver	Black		
.05	Gray/White	Black		
.03	White/Black	White		
.57	White/Silver	White		
.VW	White/White	White		
.11	Blue Daisy/White	White		
.12	Blue Daisy/Silver	White		
.13	Blue Daisy/Black	Black		
.14	Light Green/White	White		
.15	Light Green/Silver	White		
.16	Light Green/Black	Black		
.17	Harvest Pumpkin/White	White		
.18	Harvest Pumpkin/Silver	White		
.19	Harvest Pumpkin/Black	Black		
.20	Neon Red/White	White		
.21	Neon Red/Silver	White		
.22	Neon Red/Black	Black		

Contact Salesperson For Additional Cord Options



BY DEKKO



BY DEKKO