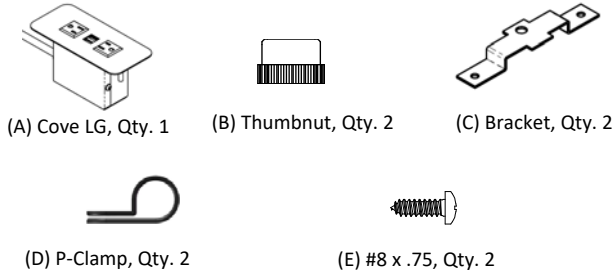


COVE LG INSTALLATION

Components & Hardware



Tools Needed

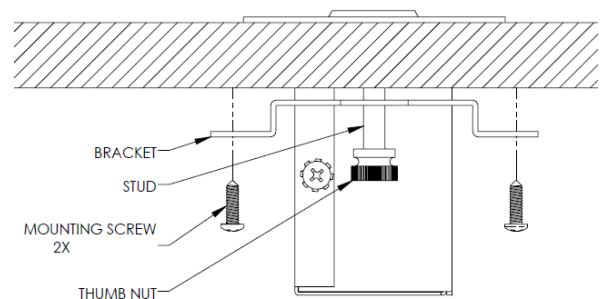


For use with: This product fits tables .25" – 1.5" thick.

Note: *Take care not to pierce finished surfaces.

Installation Instructions:

- 1-** Determine the Cove LG's (A) mounting location and prepare the surface by cutting the mounting hole as shown.
- 2-** Insert the Cove LG through the cutout from above.
- 3-** Place the Brackets (C) and Thumbnut (B) on studs as shown and tighten the nuts until secure. Use caution not to over tighten.
- 4-** Optional – Screwing bracket to underside of surface provides additional mounting support (#8 wood screws – not provided). Insert screws through holes in brackets and secure to underside of work surface as needed*.
- 5-** Run the Cove's power cord to an appropriate 120VAC power outlet.
- 6-** Use P-Clamps (D) and Screws (E) to route cord and attach to underside of work surface as needed.



Use of optional screws are recommended for 2.75" opening.