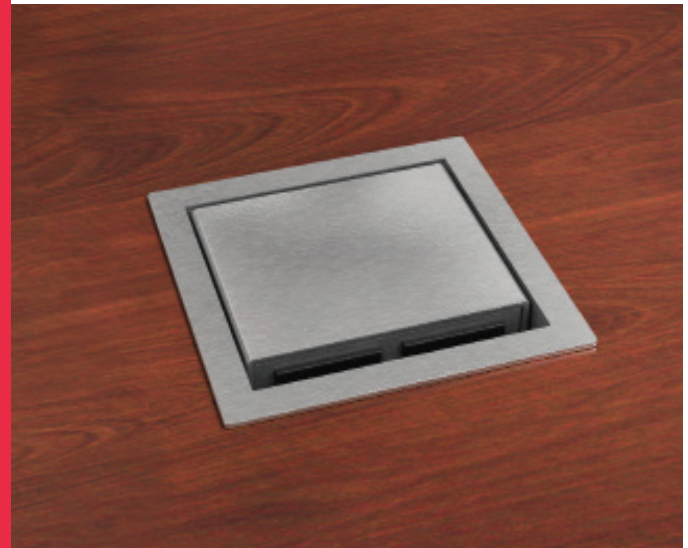




## TOP NOTCH 2



# PENT- UP POWER



### FLIP-TOP POWER & DATA SOLUTION

Top Notch 2 family of tabletop products is the ideal choice for single user applications. The lid flips up to provide access to power and data. When closed the Top Notch 2 discretely becomes part of the work surface. A variety of data options can be incorporated to satisfy your telecommunication requirements.






## FEATURES:

### Applications

In-surface/tabletop

### Standard Finishes

Silver Pearl   
 Black   
 Brushes Stainless Steel 



### Specifications

- 15A, 120VAC Power Receptacles
- Data Knockout for RJ45 (Other Data Options Available)
- Power Only Standard Cord Length: 108"
- Power & Data Standard Cord Length(s): 72" Patch & Power Cord
- Recommended Table Thickness: .75" x 1.88"
- Recommended Table Cutout: 3.40" x 3.40"
- Lid Lifts Open for Power & Data Access - Lays Flush to Surface When Closed
- UL Listed for US and Canada

### Dimensions

- Standard Top Notch 2 Dimensions: 3.70" x 3.70" x 1.30"

