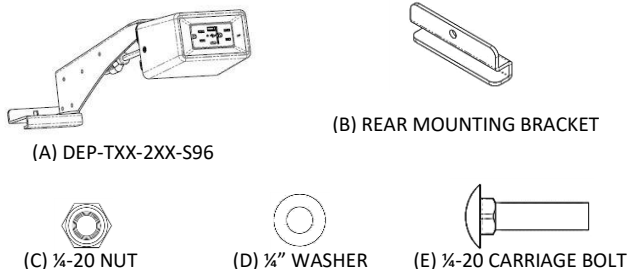
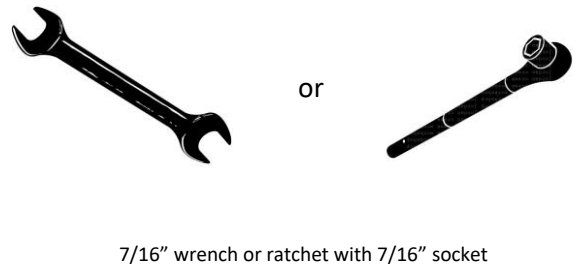


# DEPARTURE BEAM SEAT INSTALLATION

## Components & Hardware



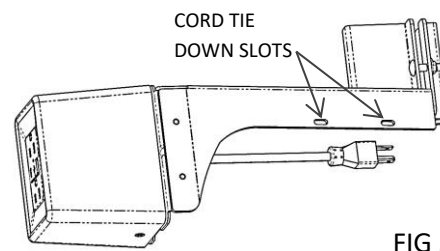
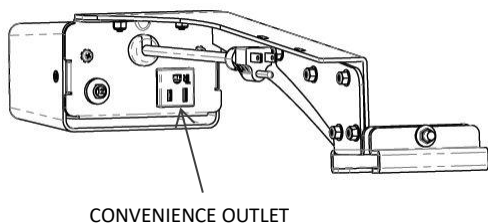
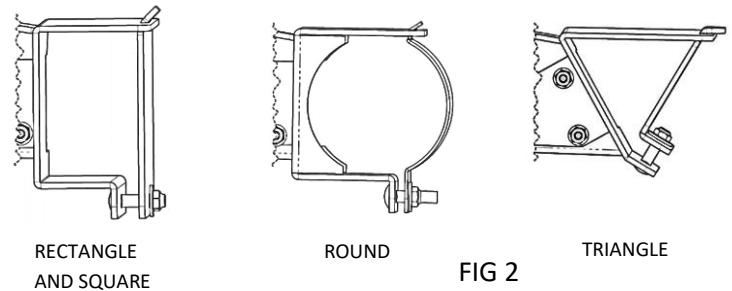
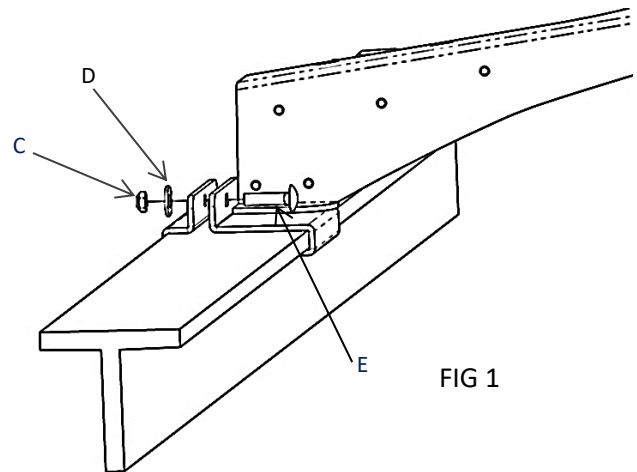
## Tools Needed



## Installation Instructions:

- 1- Position power unit as desired, (A).
- 2- Insert carriage bolt (E) through square hole in front mount bracket as shown, ensure carriage bolt is fully seated through square hole in front mount bracket. Clamp rear mounting bracket (B) to beam, install washer (D) and nut (C) as shown (FIG1)
- 3- Use the same mounting method on all other shaped beams. (FIG 2)
- 4- Run the power cord to a power outlet or next power unit as needed. Slots provided may be used for wire management as needed. (FIG 3)

**\*\*Interconnecting power supply cords shall not be located on the floor surfaces or travelers waiting spaces.**



NOTE: A furniture Power Distribution Unit is not for permanent installation as part of the building structure and not for mounting in permanently-installed furnishing such as a fixed countertop.