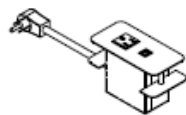


COVE INSTALLATION

(Standard, Screw Mount, Round, RJ, 25 Watt, 60 Watt)

Components & Hardware



(A) Cove, Qty. 1



(B) 1.25" Bracket, Qty. 2



(C) Thumbnut, Qty. 2



(D) P-Clamp, Qty. 2



(E) #8 x .75", Qty. 2

Tools Needed

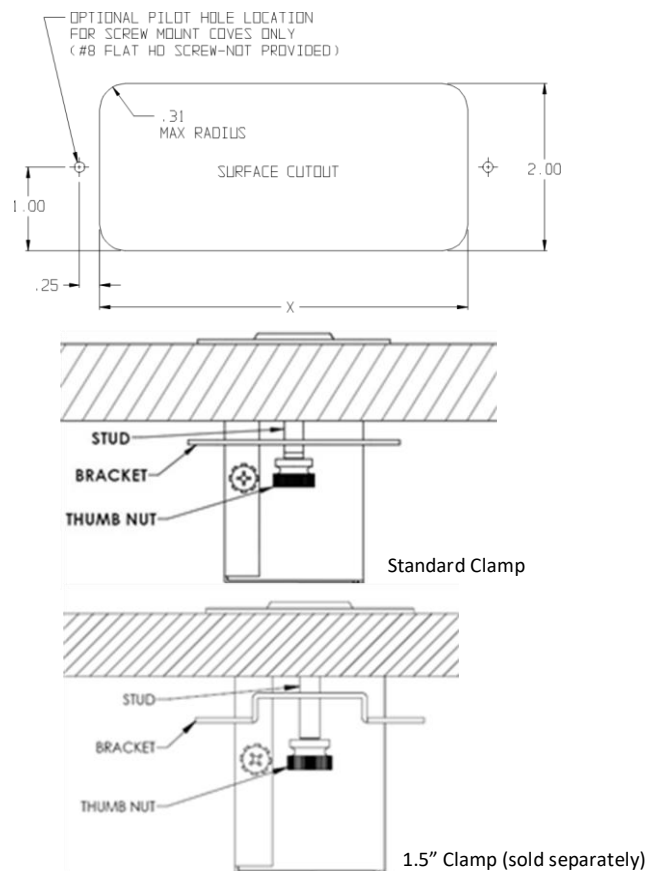


STANDARD MODELS	COV-1U	COV-2	COV-21	COV-2U	COV-2UD	COV-22U	COV-R-2U	COV-RU-2U	COV-3	COV-3-D	COV-3U	COV-31U	COV-3UD	COV-4	COV-4-D	COV-4U	COV-4UD	COV-6	COV-6U	COV-6UD	60 WATT MODELS	COV-1UC60	COV-1UC60D	COV-2UC60	COV-2UC60D	COV-3UC60	COV-3UC60D	COV-4UC60	COV-4UC60D	COV-6UC60	
"X" DIM	4.50"	4.50"	5.25"	5.25"	9.00"	7.25"	6.75"	5.75"	9.50"	7.25"	7.25"	11.00"	7.25"	11.00"	8.25"	12.00"	10.25"	12.75"	16.50"			"X" DIM	8.00"	12.00"	9.00"	13.00"	10.50"	14.50"	12.00"	16.00"	15.00"

Note: Use Standard Model dimensions for Cove Round, Screw Mount, and 25 Watt versions (e.g. COV-R-2U = COV-2U).

Installation Instructions:

- Determine the surface cutout for the Cove (A) model being installed and prepare the surface.
Note: Refer to chart to determine X dimension.
- Insert the Cove through the cutout.
- For clamping Cove*** - Place brackets (B) and thumbnuts (C) on stud. Tighten nuts until secure, do not over tighten.
For screw mount Cove (not shown) – Using countersunk holes install screws (not provided) into work surface. Tighten screws until secure, do not over tighten.
- Connect power and data as needed.
- Connections for hardwire units:
Black wire – circuit hot
White wire – circuit neutral
Green wire – circuit ground



*Surface thickness: Fits surface .25" to 1.25" with provided bracket. For surfaces up to 1.50" an alternate bracket is required (sold separately).
Note: A licensed electrician should make the hardwire connections. For use on dry work surfaces or furniture only. No serviceable parts, do not disassemble.

Plug into an appropriate outlet that is properly installed and grounded in accordance with all local codes and regulations.