



DESCRIPTION

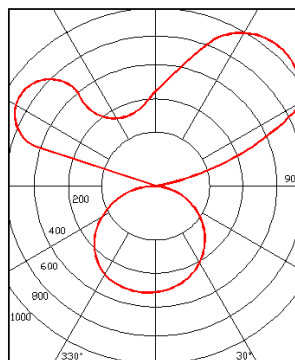
The L250 Wall luminaire is a low-profile, lensed compliment to the L200 linear pendant. Configured for either individual or continuous runs, the versatile L250 Wall is designed with clean, straight lines making it a great choice for your lighting projects in open and private offices, educational facilities, retail, or other applications.

SPECIFICATIONS

| | |
|-------------------|--|
| Housing: | 20 gauge cold-rolled steel construction |
| Lengths: | 4' and 8' fixtures that can also be joined for continuous rows |
| Finish: | Durable, low gloss, textured powder coated finish |
| End Caps: | Flat end cap provides a clean finish |
| Approvals: | UL/CUL |
| LED Engine: | Dimming driver and LED board combination |
| Optional Drivers: | Lutron, Osram, EldoLED and other options available |
| Distribution: | Standard 70/30 with optional distributions available |
| Optic: | Frosted lens creates a smooth downlight feature |
| Output Package: | Super saver and high output lumen levels available |
| Sensor: | Optional integrated daylight or occupancy sensors |
| LED Color: | Available color temperatures of 3000k, 3500k, and 4000k |
| Mounting: | Wall brackets included with fixture (2 per 4' or 3 per 8') |
| Battery: | Optional 12 watt constant power emergency battery |
| CRI: | 82+ |
| I.E.S. Data: | Available upon request |
| Warranty: | 5-Year limited warranty |

PHOTOMETRICS

* Measurements based on High level output



70/30 – Standard
3840 lumens
82% up - 18% down
105 lm/W

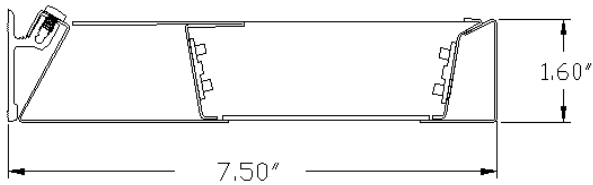


FIXTURE OPTIONS

Ordering Example: L250W-4-30-120-HO-WHT

| FIXTURE SERIES | LENGTH | LED COLOR | VOLTAGE | OUTPUT | DISTRIBUTION TYPE | EMERGENCY CIRCUIT | FINISH | INTEGRATED SENSOR | OPTIONS |
|----------------|--------|--|--|----------------------------------|-------------------|--|--|---|--|
| L250W Lens | 4 8 | 30 3000k 35 3500k 40 4000k 50 5000k | MVO 120-277v 120 120v 277 277v 347 347v | SS Super Saver HO High Output | Blank Standard | Blank None EF Separate individual emergency feed EHF Emergency through wiring with separate feed EHS Emergency through wiring single feed with shared neutral | WHT * Consult factory for custom colors | Blank None DAY Daylight OCC Occupancy | Blank None FF Fast blow fuse FS Slow blow fuse EB Emergency battery EC Emergency circuit * Consult factory for Lutron, ELdoLED, Osram, or other drivers |

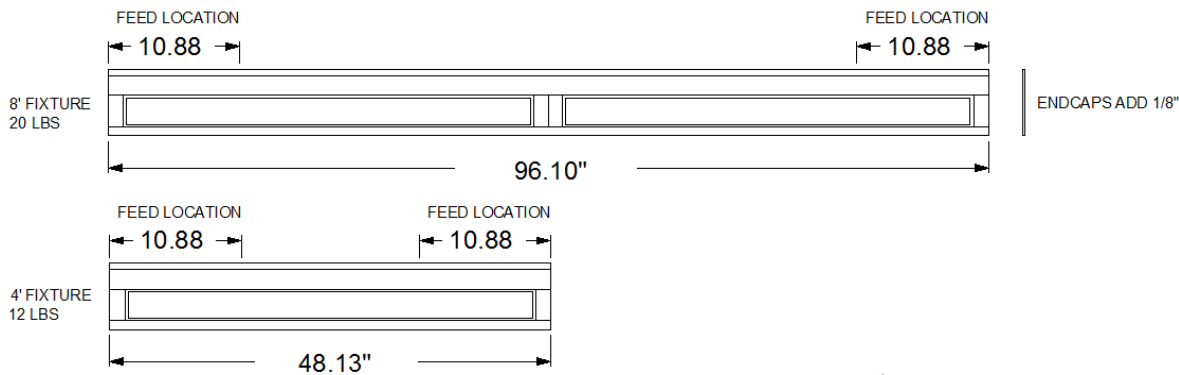
* END CAP KIT: L250W -WHT (One kit required per fixture run)



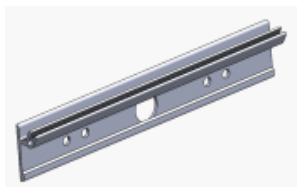
| 4' Output Package | Lumens | Watts | Lumens/Watt |
|-------------------|--------|-------|-------------|
| Super Saver (SS) | 2672 | 25.5 | 105 |
| High (HO) | 3840 | 37 | 104 |

* Based on 4000k

MOUNTING SUPPORT LENGTHS



MOUNTING HARDWARE



WALL BRACKETS INCLUDED

