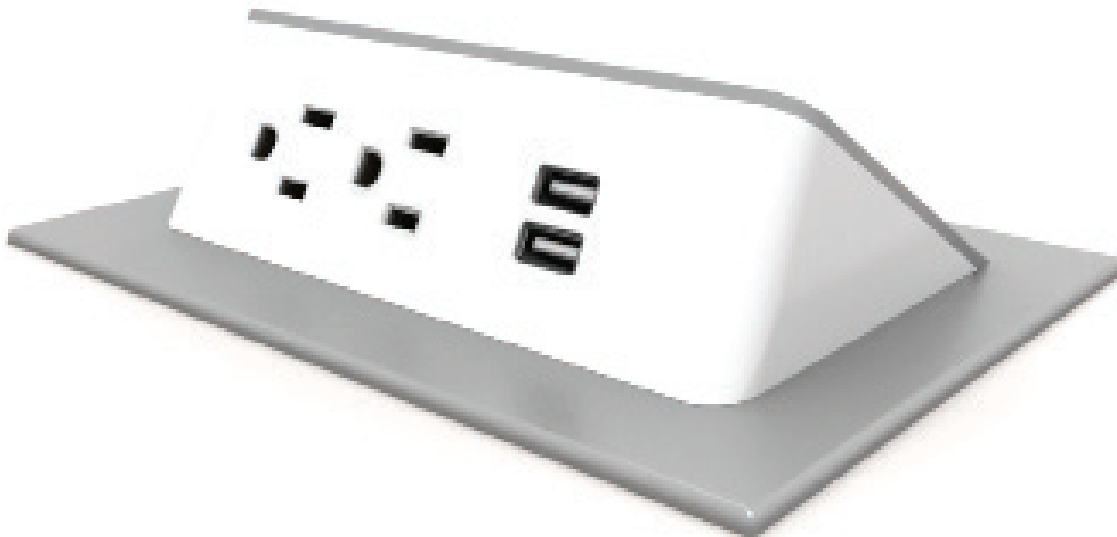


YOUR INNOVATIVE
ELECTRICAL SOLUTION.

Ashley Duo Wedge™



BY DEKKO

Distinctly Resourceful

POWERING MOMENTUM

The Ashley Duo Wedge™ provides bustling areas with convenient, easy-to-use electricity options to power the technology and devices that help energize our work. The quality componentry and durable housing make the Ashley Duo Wedge™ perfect for demanding environments like public spaces, school settings, and common areas.

Each USB port utilizes a Smart Device Recognition Chip to monitor and independently deliver the required amperage to your devices — up to 2.1 amps each — and charge them in half the time it takes with similar products on the market.

The Ashley Duo Wedge is offered as a bezel mounting option and is UL 962A and UL 111 Listed.



FEATURES:

Applications

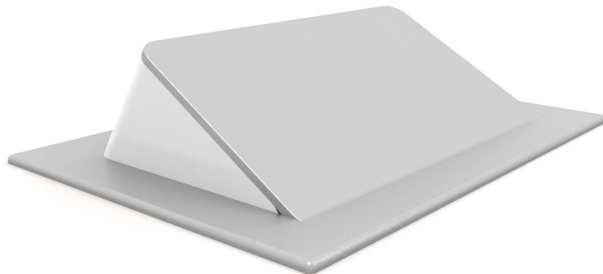
Bezel

Standard Metal Trim Finishes

- Silver
- Black
- White

Standard Plastic Colors

- White
- Grey
- Black
- Harvest Pumpkin
- Neon Red
- Blue Daisy
- Light Green

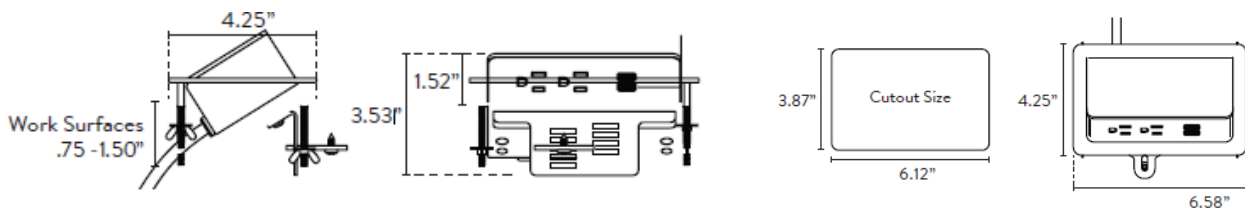


Specifications

- 2- 15A, 120V AC Power Outlets
- 2- 2.1A/10.5W USB Charging Ports
- 6' or 10' Cord or Hardwire Option
- UL 962A and UL 111 Listed
- UL 1310 Recognized
- Meets UL Spill Requirements
- Class 2, FCC Part 15 A Approved
- Meets USB.org Battery Charging 1.2 Specifications

Dimensions

- Ashley Duo Wedge™ Standard Dimensions: 6.58" x 4.25" x 3.87"



DESCRIPTION	LENGTHS CORDED & HARDWARE	FINISH PLASTIC FACE/METAL TRIM	MODEL
ASHLEY DUO WEDGE - BEZEL			
<ul style="list-style-type: none"> 2 AC 15 Amp Power Outlets, 2 USB 2.1 Amp Charging Ports 	6' Corded	Black/Black	305063.01.04.06
		Gray/Silver	305063.01.01.06
		White/Silver	305063.01.57.06
		White/White	305063.01.VW.06
	10' Corded	Black/Black	305063.01.04.10
		Gray/Silver	305063.01.01.10
		White/Silver	305063.01.57.10
		White/White	305063.01.VW.10
	6' Hardwire	Black/Black	200070.01.04.06
		Gray/Silver	200070.01.01.06
		White/Silver	200070.01.57.06
		White/White	200070.01.VW.06
	10' Hardwire	Black/Black	200070.01.04.10
		Gray/Silver	200070.01.01.10
		White/Silver	200070.01.57.10
		White/White	200070.01.VW.10

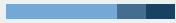
Please note: There is a cord length upcharge for models specified with 10' cord/hardwire lengths. See below for instructions on how to specify units with specialty colors finishes.

SPECIFICATION INSTRUCTIONS

TO ORDER PLEASE SPECIFY THE FOLLOWING

Step 1:	Step 2:	Step 3:
Base Model # (Part Number)	Finish Options	NEMA Plug or Hardwire Lengths

EXAMPLE



305050.01.57.06

Base Model: Ashley Duo
Finish Option: White/Silver
Cord Length: 6'

Code	Plastic Face/Metal Trim	Cord Color	Code	Cord Length
.04	Black/Black	Black	.06	6' or 72"
.02	Black/Silver	Black	.10	10' or 120"
.08	Gray/Black	Black		
.01	Gray/Silver	Black		
.05	Gray/White	Black		
.03	White/Black	White		
.57	White/Silver	White		
.VW	White/White	White		
.11	Blue Daisy/White	White		
.12	Blue Daisy/Silver	White		
.13	BlueDaisy/Black	Black		
.14	Light Green/White	White		
.15	Light Green/Silver	White		
.16	Light Green/Black	Black		
.17	Harvest Pumpkin/White	White		
.18	Harvest Pumpkin/Silver	White		
.19	Harvest Pumpkin/Black	Black		
.20	Neon Red/White	White		
.21	Neon Red/Silver	White		
.22	Neon Red/Black	Black		

Contact Salesperson For Additional Cord Options

