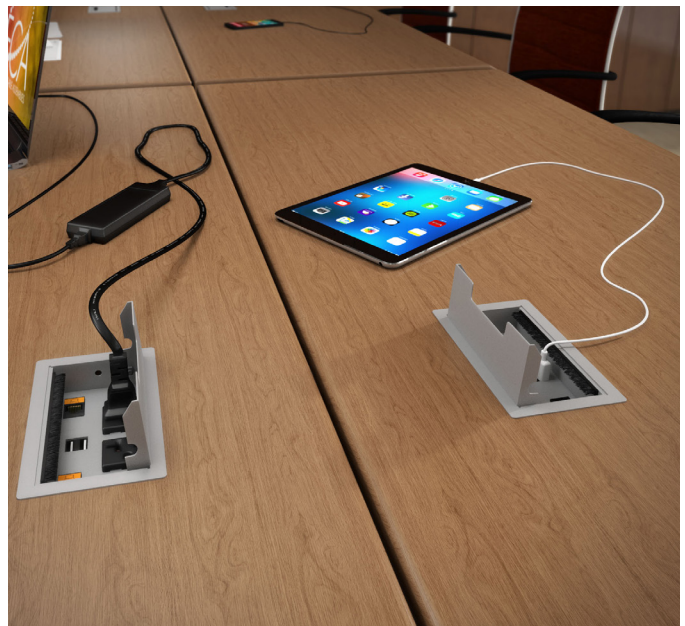




# VILLA™ SERIES

## DAISYLINK™



## UNCONSTRAINED RECONFIGURING

### MODULAR CONNECTIONS

Villa™ with Daisylink™ delivers the adaptable power, USB, and data capabilities required in today's learning and work environments. The non-sequential 4 wire 2 circuit electrical system allow units to daisy-chain in any arrangement from a single infeed. Reconfiguring and nested storage is accommodated without the hassle of uninstalling units, thanks to its ergonomic design.

**FEATURES:**

Mounting Capabilities  
Bezel /In-Surface

Applications  
Work Surfaces  
Training Tables

Standard Finishes\*

Silver Pearl



Black (Textured Finish)



White



Grommet Finishes  
*Flush Lid & No-Lid Styles:*

Silver



Black



White



Brushed Aluminum



Brushed Stainless Steel



*Lift Lid Style:*

Silver



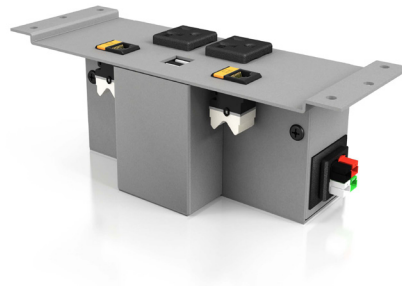
Black



White



\*Interested in our specialty finishes?  
Contact us for details.

**UNIT SPECIFICATIONS:**

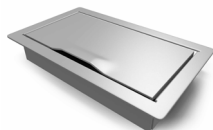
- 20A/120V AC Receptacles
- 2.1A/5V Shared; Dual USB Charging Ports (*Available on Select Models*)
- Data Knockouts (*Units Offered With or Without RJ45 Jacks; Additional Keystone Data Options Available for Purchase*)
- Cable Clamps and Screws Included for Installation
- Used with 4 Wire 2 Circuit Starter and Interconnecting Cables (*Purchased Separately*)
- Hardwire Starter & Interconnecting Cable Lengths: Minimum 12" - 180" Maximum (*Specify in 1" Increments*)
- Circuit 1 and 2 Options - Link Up-to 40 Receptacles Across 2 Circuits (*US Only*)
- ETL Listed for US and Canada

**GROMMET SPECIFICATIONS:**

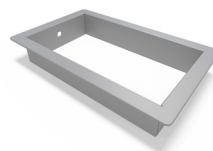
- Flush Lid, Lift Lid, or No-Lid Styles (*Sold Separately*)
- Fits Surface Thicknesses: 1" Minimum
- Fits Surface Cutout: 3.0" x 5.25"



FLUSH LID  
GROMMET



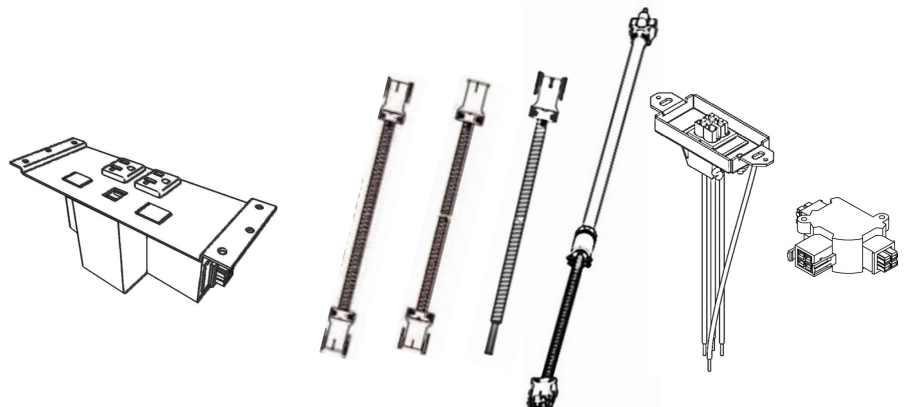
LIFT LID  
GROMMET



NO-LID  
GROMMET

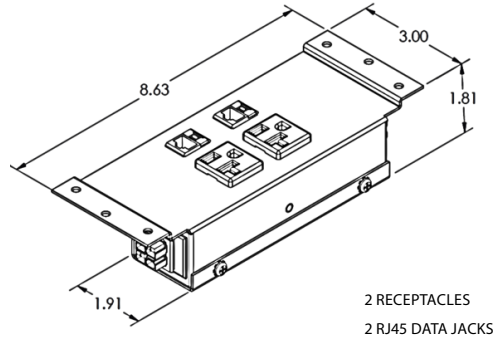
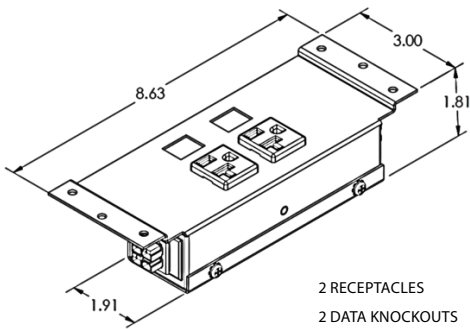
**DAISYLINK™ COMPONENTS**

REFER TO DAISYLINK™ COMPONENTS PAGE IN ORDERING INFORMATION FOR DETAILS

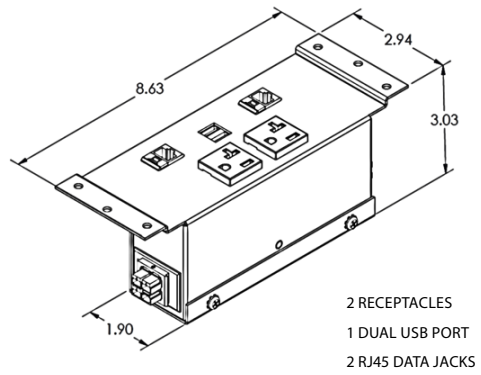
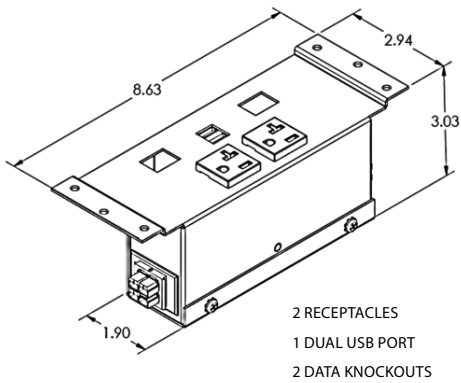


Series dimensions on following page...

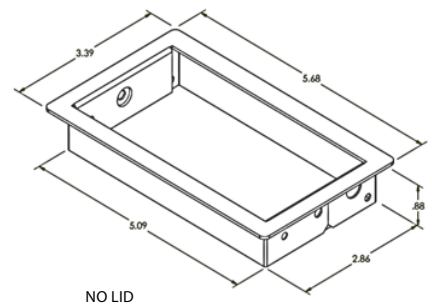
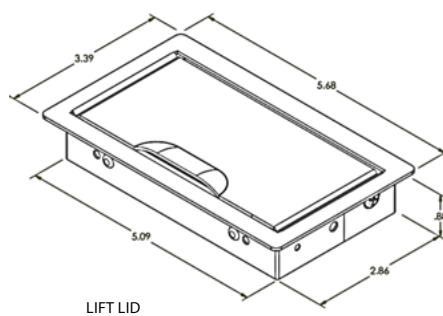
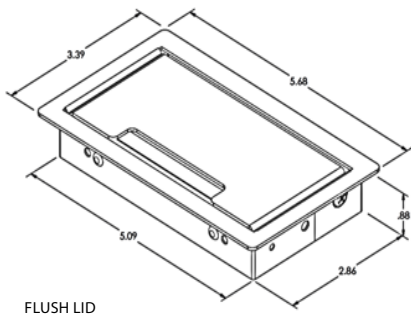
VILLA SERIES | POWER & DATA



VILLA SERIES | POWER, USB & DATA



VILLA SERIES | GROMMETS



Ordering information on following page...

# DAISYLINK™ CONFIGURATIONS

## SELECT YOUR POWER:

POWER RECEPTACLES	DUAL USB PORTS	DATA KNOCKOUT	RJ45 DATA JACK
----------------------	-------------------	------------------	-------------------

## CHOOSE YOUR FINISH:

SILVER

BLACK

WHITE

### VILLA™ SERIES | POWER & DATA | CIRCUIT 1

2	-	2	-	VIL-4-1-DKO-S	VIL-4-1-DKO-B	VIL-4-1-DKO-W
2	-	-	2	VIL-4-1-D-S	VIL-4-1-D-B	VIL-4-1-D-W

### VILLA™ SERIES | POWER, USB & DATA | CIRCUIT 1

2	1	2	-	VIL-4-1-U-DKO-S	VIL-4-1-U-DKO-B	VIL-4-1-DKO-W
2	1	-	2	VIL-4-1-U-D-S	VIL-4-1-U-D-B	VIL-4-1-U-D-W

CHANGE 4-1 TO 4-2 IN PART NUMBER TO SPECIFY CIRCUIT 2 CONFIGURATIONS  
 GROMMETS SOLD SEPARATELY  
 DATA KNOCKOUT OPTIONS SOLD SEPARATELY  
 CALL FOR PRICING

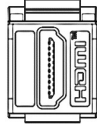
Data knockout and grommet options on following page...

## DATA &amp; GROMMET ACCESSORIES

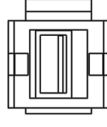
## SELECT YOUR DATA KNOCKOUT OPTIONS:



A.



B.



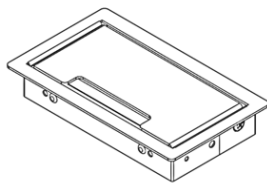
C.

DESCRIPTION	FINISH	PART NUMBER
A. RJ45 cat 6 punch down data jack, <i>Siemon™ brand</i>	Black	RJ45-B
B. HDMI keystone jack, female/female	Black	HDMI-KEY-B
C. USB 2.0 Type-A keystone, female/female	Black White	USB-20AA-B-72K USB-20AA-W-72K

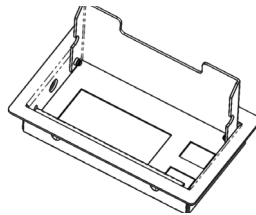
ADDITIONAL DATA OPTIONS AVAILABLE

PLEASE CONTACT OUR KNOWLEDGEABLE CUSTOMER SERVICE TEAM FOR MORE DETAILS

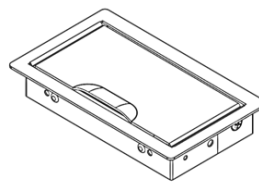
## CHOOSE A GROMMET LID (OPTIONAL):



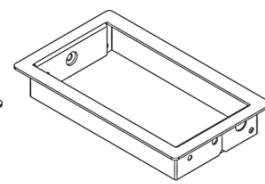
D.



E.



F.



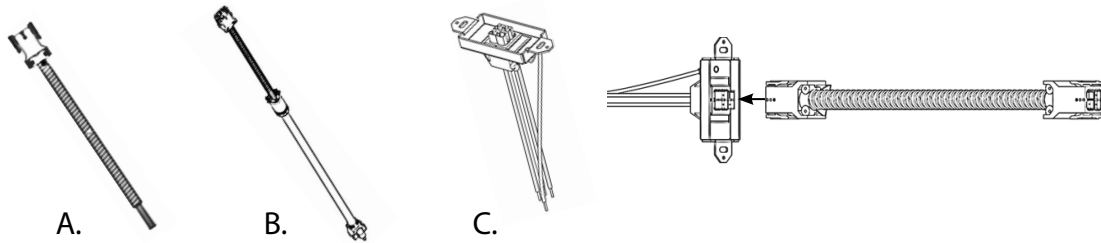
G.

DESCRIPTION	FINISH	PART NUMBER
D. Flush Lid Style - includes brush trim and small cutout for lid opening; sits flush to surface	Silver Black White Brushed Aluminum Brushed Stainless Steel	VIL-GROM-F-S VIL-GROM-F-B VIL-GROM-F-GW VIL-GROM-F-AL VIL-GROM-F-SS
E. Flush Lid Style with Data - fully customizable; includes 1 telecom plate knockout and 2 data knockouts <small>NOTE: INTENDED AS A STAND-ALONE PRODUCT; NOT COMPATIBLE WITH VILLA POWER BASES.</small>	Silver Black White	VIL-GROM-D-F-S VIL-GROM-D-F-B VIL-GROM-D-F-GW
F. Lift Lid Style - Raised lip top for opening assistance	Silver Black White	VIL-GROM-L-S VIL-GROM-L-B VIL-GROM-L-GW
G. No Lid Style - outer trim for surface cutout	Silver Black White Brushed Aluminum Brushed Stainless Steel	VIL-GROM-S VIL-GROM-B VIL-GROM-GW VIL-GROM-AL VIL-GROM-SS

Daisylink™ components on following page...

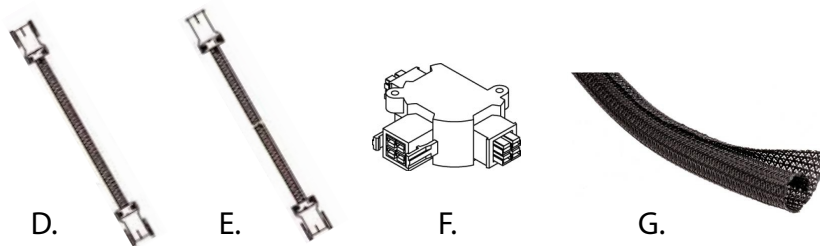
## DAISYLINK™ COMPONENTS

### SELECT YOUR STARTER INFEED OPTION:



DESCRIPTION	LENGTH/FINISH	PART NUMBER
A. Hardwired multi-circuit starter infeed with female DaisyLink™ connector; hardwires into electrical junction box *Specify in increments of 1" Cable Lengths in Part Number	12" Min - 180" Max	42 SB2-XXX*
B. Molded 3-prong plug single-circuit starter power infeed with female DaisyLink™ connector; plugs directly into wall or floor outlet	72"	42 20AP1-72
C. Quick Disconnect multi-circuit wall/floor insert with male DaisyLink™ connector; wires into junction box to accept female DaisyLink™ interconnecting cable (To be used with 42 FF-XXX interconnecting cable - see below)	Black	42 QD Insert

### CHOOSE YOUR INTERCONNECTING CABLES:



DESCRIPTION	LENGTH/FINISH	PART NUMBER
D. Female/Female Interconnecting Cable *Specify in increments of 1" Cable Lengths in Part Number	12" Min - 180" Max	42 FF-XXX*
E. Female/Male Interconnecting Cable *Specify in increments of 1" Cable Lengths in Part Number	12" Min - 180" Max	42 FM-XXX*
F. T-Connector used to branch cabling in different directions; 2 male and 1 female endings	Black	Daisy T
G. Nylon Black Cable Covers - Add "B" to cabling part number	Black	Cable Covers "B"

TO LEARN HOW TO CONFIGURE AND ASSEMBLE A 4 WIRE 2 CIRCUIT SYSTEM, SEE DAISYLINK™ SYSTEM LITERATURE FOR DETAILS OR CONTACT OUR KNOWLEDGEABLE CUSTOMER SERVICE TEAM

IF YOU HAVE STANDARD TABLE SIZES, SEE THE VILLA™ DAISYLINK™ QUICK KIT LITERATURE FOR PRE-SPECIFIED CABLING KITS; FOR HELP WITH YOUR INDIVIDUAL TABLE OR ROOM CONFIGURATIONS, CONTACT OUR KNOWLEDGEABLE CUSTOMER SERVICE TEAM