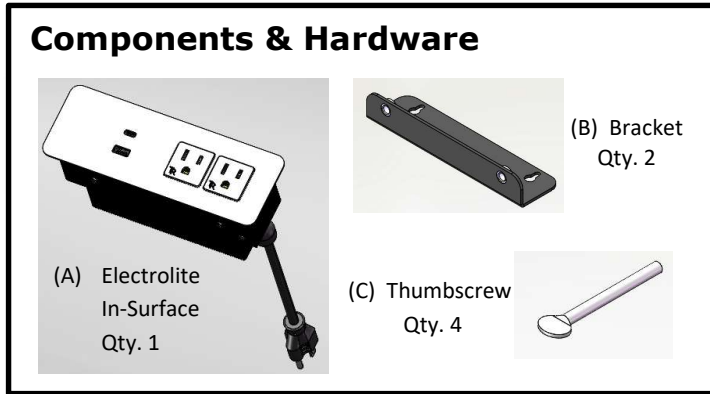


ELECTROLITE IN-SURFACE INSTALLATION

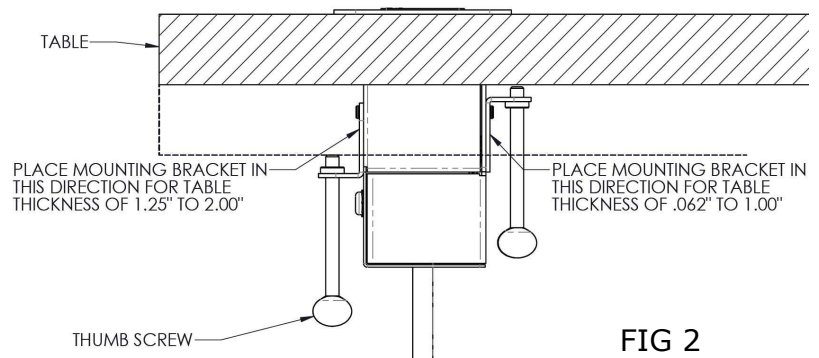
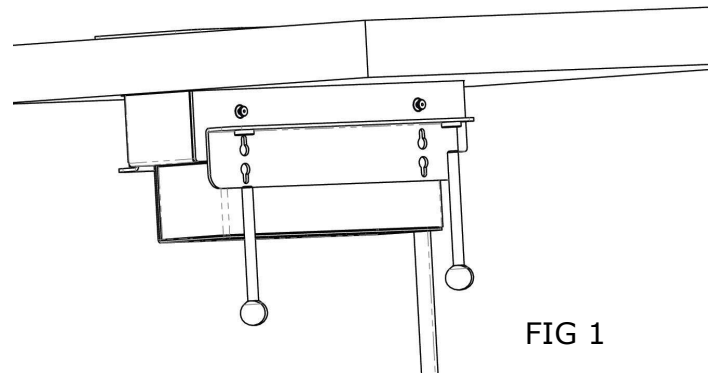


MODEL	ES-2	ES-2R	ES-AC	ES-1AC	ES-3	ES-3R	ES-1AC1	ES-2AC	ES-2ACR	ES-4	ES-4R	ES-2AC1	ES-2AC1R	ES-3AC	ES-3ACR	ES-5	ES-5R
"X" DIM	4-1/4"	5-1/2"	6-3/4"	8-3/8"													
"Y" DIM	2"																
MAXIMUM CORNER RADIUS: 5/16"																	

* Surface Thickness:
1/16" to 2"

Installation Instructions:

- 1- Determine the surface cutout size for the Electrolite In-Surface Model (A) that is being installed, prepare the surface, then make the cut. Note: Refer to the chart above to determine the correct dimensions to use to cut the proper opening in the surface.
- 2- Insert the Electrolite In-Surface through the cutout.
- 3- Place the key slots in the Clamps (B) over the T-Studs in the Electrolite In-Surface (A) and slide latch them into place. Insert the Thumb Screws (C) and tighten the assembly against the underside of the table. See FIG 2.
- 4- Connect to power as needed.



Plug into an appropriate outlet that is properly installed and grounded in accordance with all local codes and regulations.