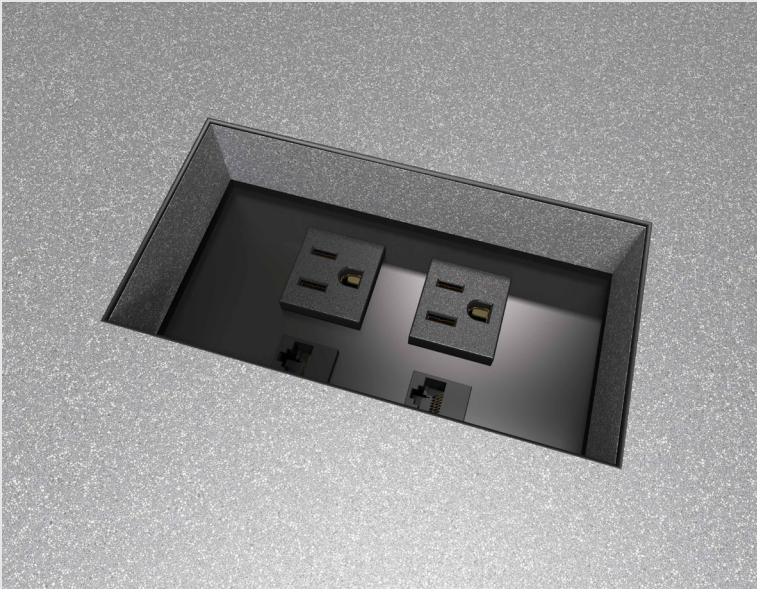




VILLA™ SERIES

CORDED & HARDWIRED



UNCONSTRAINED RECONFIGURING

MAXIMIZE TRAINING TABLE FUNCTIONALITY

Deliver the adaptable power, USB, and data capabilities required in today's learning and work environments. The sleekly designed Villa™ Series integrates seamlessly; multi-user connectivity is reachable from above and beneath the work-surface while optional grommets offer a polished aesthetic. Compatible to training table ergonomics, reconfiguring and nested storage is accommodated without the hassle of removing units.



FEATURES:

Mounting Capabilities

Bezel/In-Surface






Applications

Work Surfaces
Training Tables

Standard Finishes*

Silver 
Black 
White 

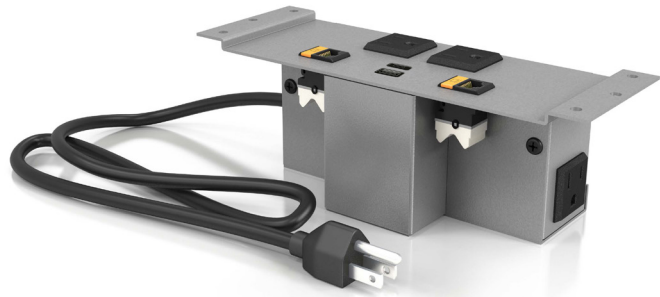
Grommet Finishes

Flush Lid & No-Lid:
Silver 
Black 
White 
Brushed Aluminum 
Brushed Stainless Steel 

Lift Lid:

Silver 
Black 
White 

**Interested in our specialty finishes?
Contact us for details.*

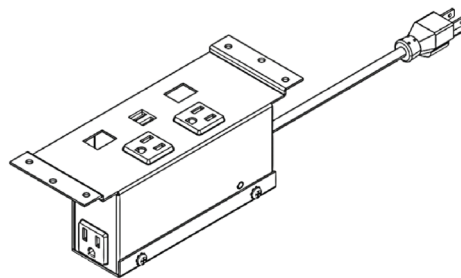
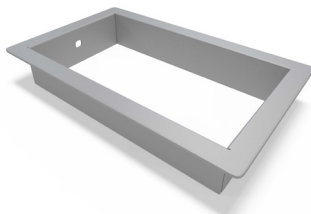
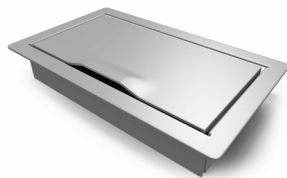
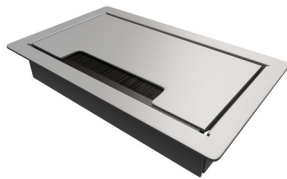


UNIT SPECIFICATIONS:

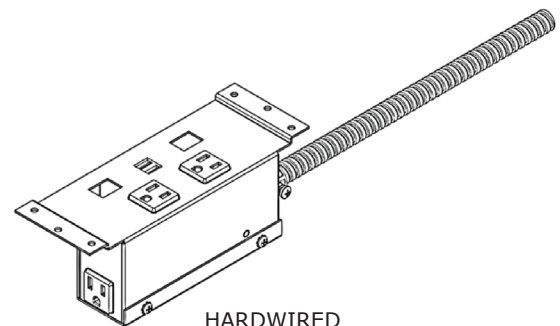
- 15A/120V AC Receptacles
- (1) 2.4A Reversible USB-A Charging Port & (1) 60-Watt USB-C Power Delivery Port with GaN Technology or (2) 2.1A/5V Shared; Dual USB Charging Ports
- Convenience Outlet
- Data Knockouts (Units Offered With or Without RJ45 Jacks; Additional Keystone Data Options Available for Purchase)
- Standard Cord and Hardwired Whip Lengths: 36", 72" or 108" (Specify in Part Number)
- Cable Clamps and Screws Included for Installation
- UL/ETL Listed for US and Canada

GROMMET SPECIFICATIONS:

- Flush Lid, Lift Lid, or No-Lid Styles (Sold Separately)
- Fits Surface Thicknesses: 1" Minimum
- Fits Surface Cutout: 3.0" x 5.25"



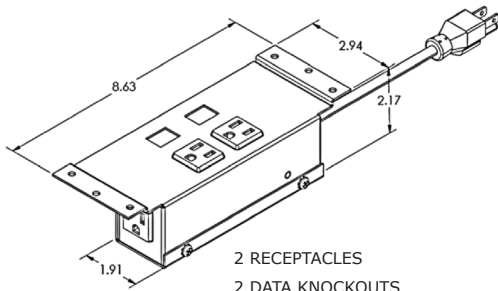
CORDED



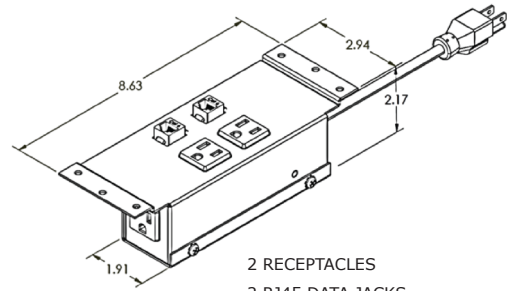
HARDWIRED

Ordering information on following page...

VILLA SERIES | POWER, DATA & CONVENIENCE OUTLETS

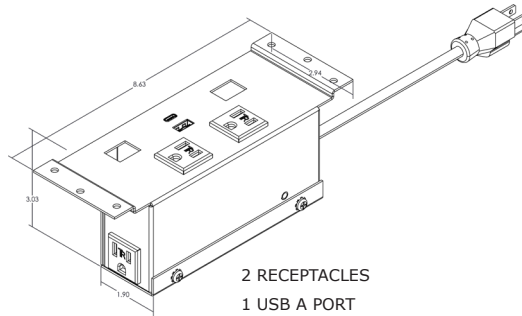


- 2 RECEPTACLES
- 2 DATA KNOCKOUTS
- 1 CONVENIENCE OUTLET



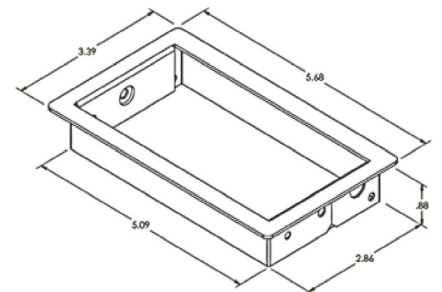
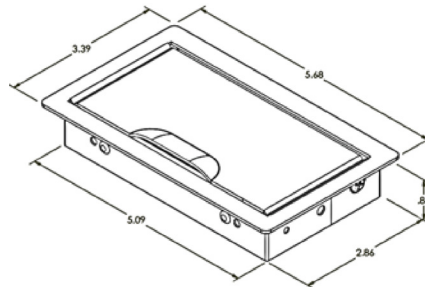
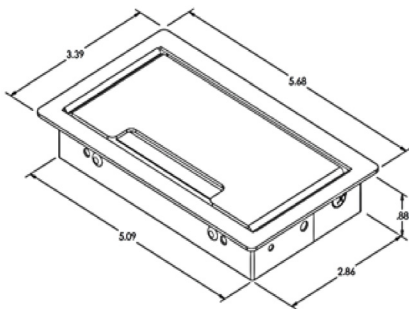
- 2 RECEPTACLES
- 2 RJ45 DATA JACKS
- 1 CONVENIENCE OUTLET

VILLA SERIES | POWER, USB, DATA & CONVENIENCE OUTLETS



- 2 RECEPTACLES
- 1 USB A PORT
- 1 USB C PORT
- 2 DATA KNOCKOUTS
- 1 CONVENIENCE OUTLET

VILLA SERIES | GROMMETS



Series dimensions on following page...

CORDED CONFIGURATIONS

SELECT YOUR POWER:

CHOOSE YOUR FINISH:

POWER RECEPTACLES	DUAL USB-A PORTS	USB A + C PORTS	DATA KNOCKOUT	RJ45 DATA JACK	CONVENIENCE OUTLET
2	-	-	2	-	1
2	-	-	-	2	1

Silver

Black

White

VILLA™ SERIES | POWER, DATA, & CONVENIENCE OUTLETS | SPECIFY 36", 72", OR 108" CORD LENGTH IN PART NUMBER

2	-	-	2	-	1	VIL-C-DKO-S-__	VIL-C-DKO-B-__	VIL-C-DKO-W-__
2	-	-	-	2	1	VIL-C-D-S-__	VIL-C-D-B-__	VIL-C-D-W-__

VILLA™ SERIES | POWER, USB, & CONVENIENCE OUTLETS | SPECIFY 36", 72", OR 108" CORD LENGTH IN PART NUMBER

2	1	-	2	-	1	VIL-C-U-DKO-S-__	VIL-C-U-DKO-B-__	VIL-C-U-DKO-W-__
2	1	-	-	2	1	VIL-C-U-D-S-__	VIL-C-U-D-B-__	VIL-C-U-D-W-__

VILLA™ SERIES | POWER, USB, & CONVENIENCE OUTLETS | AVAILABLE ONLY IN 108" CORD LENGTH

2	-	1	2	-	1	305288.02.25.09	305288.02.04.09	305288.02.38.09
2	-	1	-	2	1	305288.03.25.09	305288.03.04.09	305288.03.38.09

- FILL __ IN PART NUMBER WITH DESIRED WHIP LENGTH: 36, 72, OR 108 (PRICING IS STANDARD FOR ALL THREE WHIP LENGTHS)
- OTHER WHIP LENGTHS AVAILABLE AT COST: 144" AND 180"
- GROMMETS SOLD SEPERATELY
- DATA KNOCKOUT OPTIONS SOLD SEPERATELY
- CALL FOR PRICING

HARDWIRED CONFIGURATIONS

SELECT YOUR POWER:

CHOOSE YOUR FINISH:

POWER RECEPTACLES	DUAL USB PORTS	DATA KNOCKOUT	RJ45 DATA JACK	CONVENIENCE OUTLET
2	-	2	-	1
2	-	-	2	1

Silver

Black

White

VILLA™ SERIES | POWER, DATA, & CONVENIENCE OUTLETS | SPECIFY 36", 72", OR 108" CORD LENGTH IN PART NUMBER

2	-	2	-	1	VIL-DKO-S-__HW	VIL-DKO-B-__HW	VIL-DKO-W-__HW
2	-	-	2	1	VIL-D-S-__HW	VIL-D-B-__HW	VIL-D-W-__HW

VILLA™ SERIES | POWER, USB, & CONVENIENCE OUTLETS | SPECIFY 36", 72", OR 108" CORD LENGTH IN PART NUMBER

2	1	2	-	1	VIL-U-DKO-S-__HW	VIL-U-DKO-B-__HW	VIL-U-DKO-W-__HW
2	1	-	2	1	VIL-U-D-S-__HW	VIL-U-D-B-__HW	VIL-U-D-W-__HW

- FILL __ IN PART NUMBER WITH DESIRED WHIP LENGTH: 36, 72, OR 108 (PRICING IS STANDARD FOR ALL THREE WHIP LENGTHS)
- OTHER WHIP LENGTHS AVAILABLE AT COST: 144" AND 180"
- GROMMETS SOLD SEPERATELY
- DATA KNOCKOUT OPTIONS SOLD SEPERATELY
- CALL FOR PRICING

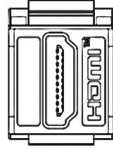
Data and grommet options on following page...

DATA & GROMMET ACCESSORIES

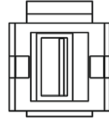
SELECT YOUR DATA KNOCKOUT OPTIONS



A.



B.



C.

DESCRIPTION

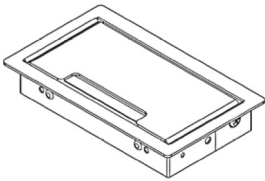
FINISH

PART NUMBER

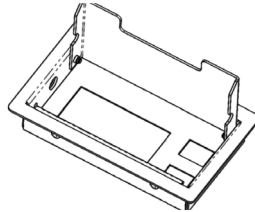
A.	RJ45 cat 6 punch down data jack, Siemon™ brand	Black	RJ45-B
B.	HDMI keystone jack, female/female	Black	HDMI-KEY-B
C.	USB 2.0 Type-A keystone, female/female	Black White	USB_20AA-B-72K USB-20AA-W-72K

ADDITIONAL DATA OPTIONS AVAILABLE
PLEASE CONTACT OUR KNOWLEDGEABLE CUSTOMER SERVICE TEAM FOR MORE DETAILS

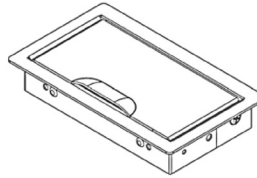
CHOOSE A GROMMET LID (OPTIONAL)



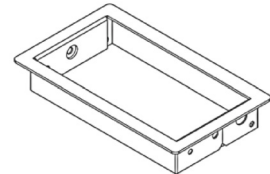
D.



E.



F.



G.

DESCRIPTION

FINISH

PART NUMBER

D.	Flush Lid Style - includes brush trim and small cutout for lid opening; sits flush to surface	Silver Black White Brushed Aluminum Brushed Stainless Steel	VIL-GROM-F-S VIL-GROM-F-B VIL-GROM-F-GW VIL-GROM-F-AL VIL-GROM-F-SS
E.	Flush Lid Style with Data - fully customizable; includes 1 telecom plate knockout and 2 data knockouts <i>NOTE: INTENDED AS A STAND-ALONE PRODUCT; NOT COMPATIBLE WITH VILLA POWER BASES.</i>	Silver Black White	VIL-GROM-D-F-S VIL-GROM-D-F-B VIL-GROM-D-F-GW
F.	Lift Lid Style - Raised lip top for opening assistance	Silver Black White	VIL-GROM-L-S VIL-GROM-L-B VIL-GROM-L-GW
G.	No Lid Style - outer trim for surface cutout	Silver Black White Brushed Aluminum Brushed Stainless Steel	VIL-GROM-S VIL-GROM-B VIL-GROM-GW VIL-GROM-AL VIL-GROM-SS